

Applying Events to a New Quantization Grid Setting in Hyper Edit

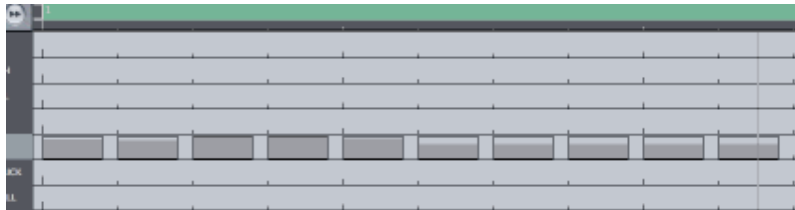
One question that seems to crop up every now and then is how to shift events to lock to a newly altered Quantization Grid Setting.

The problem is that once you have drawn events at a chosen Q grid resolution and then change that grid setting the events remain at the original Q Grid Setting even though you can clearly see events being 'Off Grid'.

In the following example we re-quantize events from a 1/16 grid to a 16E Swing grid

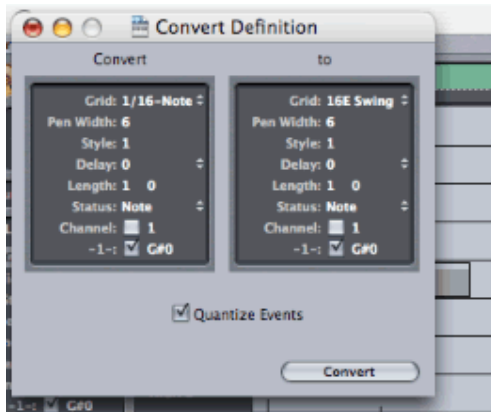
Here's how to perform this function efficiently:

1) Select the appropriate Event Track. *The Screen Shot below shows events locked to our original 1/16 Grid*



2) From the **Hyper** Menu select **Convert Event Definition...**

This launches the following window:



3) Only parameter values in the **to** box can be altered. So we simply change its Grid value to 16E Swing.

Make sure that the **Quantize Events** box is checked!

4) Click Convert and you will see accurate shifting of Events in line with your new Q Grid value :)



Njoi :)