

CMP 4a / Music Tec 2a – (004)

Mike Cullen www.83db.com

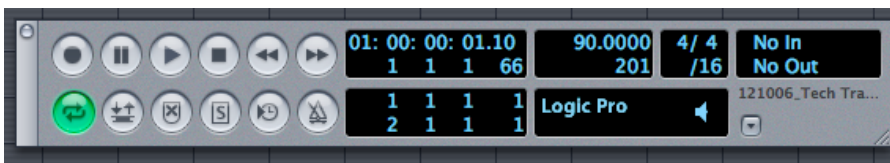
LOGIC PRO / MIDI CLASS – Part 04

The Transport Window

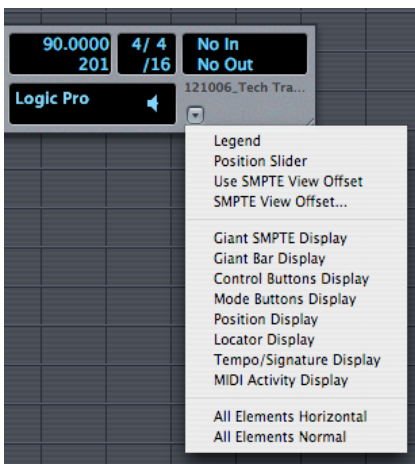
Tools

The Transport Window

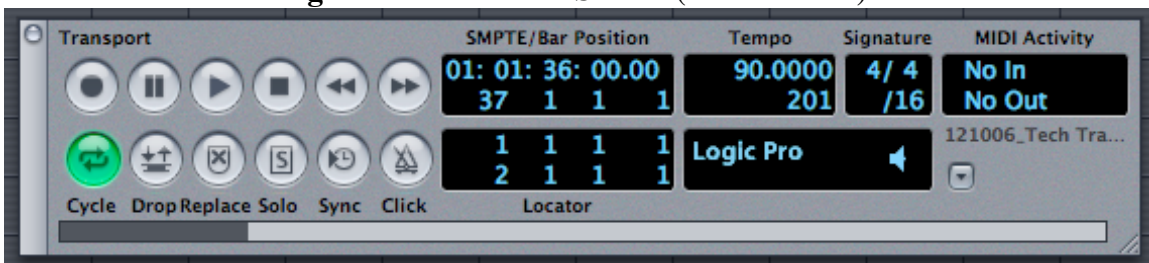
The Transport Window is accessible from the Windows Menu and defaults to the following view displaying all elements.



You can customize the Transport view by clicking on the little drop arrow in the bottom-right area.



Here is a view with 'Legend' and 'Position Slider' (bar at bottom) enabled.



CMP 4a / Music Tec 2a – (004)

Mike Cullen www.83db.com

1. The Legend will help you identify and familiarise yourself with the controls.

2. The Position Slider is a great option. The Darker portion allows you too gauge how far into the song you are as viewed in the Arrange Window relative to the **end point** as determined by the bottom number in the Tempo pane.

You can Click-hold on the bar and drag to quickly navigate left or right to a new song position. Worth leaving visible all the time!

3. Cycle. Toggle (green) to engage sequencer cycling (loop playback) mode. Adjust the length of the cycle by shift-clicking the green stripe on bar ruler or grabbing the lower corners. Grab the stripe in the middle to reposition it. Alternatively adjust the bar values in **Locator** section of the Transport Window.

Skip Cycle. Drag a new cycle length from **right to left** so that the left locator is a greater number than the right locator. This creates a thin green stripe on the upper edge of the Bar ruler.

Use skip cycle to skip the section defined between the locators. Useful for trying out new transitions. Try it!

4. Drop (Autodrop). Engage the Autodrop button to automatically activate and deactivate record mode via predefined locator positions. The Autodrop stripe resides on the **lower edge** of the Bar Ruler. When cycle mode is also in use you will see 2 green stripes in the Bar ruler. Cycle and Autodrop lengths can be different. Use Autodrop for correcting tricky passages or for editing new takes.



Below you can see that the Autodrop locator info is displayed in the right pane. The left pane is the Cycle info.



5. Replace Mode. This button turns **Orange** when engaged.

In Replace Mode, any newly recorded data is stored in a new region. If an existing region is being overwritten during Replace Mode, **its data is deleted** *between the in and out points of the new recording*. Replace Mode is Destructive in this scenario.

6.Solo. When engaged the 'S' Solo button turns Yellow. Only selected regions will play in Solo Mode.

CMP 4a / Music Tec 2a – (004)

Mike Cullen www.83db.com

Solo Lock. A Double-Click on the Solo button engages ‘Solo-Lock’ Mode. A **Padlock** Symbol appears on the Solo Button. In this mode you can move and edit other regions while still maintaining the Solo status of all other regions.

7. Sync. Engage the Sync button to slave Logic to an external source. The other device supplies the Master Clock. The Button and the Bar Ruler will change to Blue. **Click-Hold** to access more Sync Options and Settings.

8. Metronome. Click-Hold to access Recording and Metronome Settings. You can disable the Metronome independently for playback and recording. To prevent the Metronome being sent out to external MIDI devices simply choose ‘**Off**’ in the choices for MIDI Port.

An alternative Transport view is possible when working in the **Arrange Window**. ‘**view**’ Menu > ‘**Transport Buttons**’. This is a fixed view and part of the Arrange border.

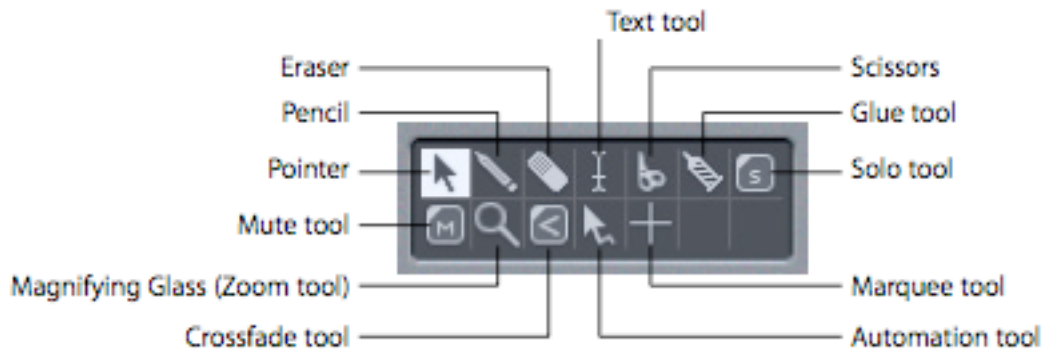


I set up a Key Command ‘T’ to Toggle this view on and off from the keyboard.

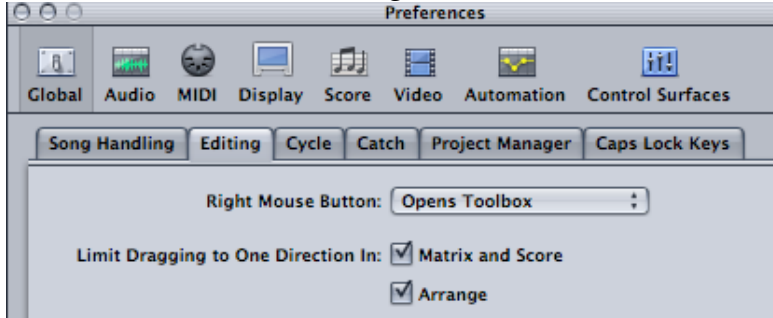
CMP 4a / Music Tec 2a – (004)

Mike Cullen www.83db.com

Tools



Note: You can assign the Toolbox to the right Mouse button:
Preferences > Global > Editing



- Arrow:** Selecting / Moving / Resizing a region or event.
- Pencil:** Add new Regions / Select / Resize
- Eraser:** Delete Regions & Events
- Text:** Rename Regions
- Scissors:** Split Regions & Notes
- Glue:** Merge Regions & Notes
- Solo:** Select & Solo Regions and Notes
- Mute:** Select & Mute Regions and Notes
- Magnifying Glass:** Zoom in by Rubber-Banding around a selection. Click the Background to return to normal Zoom.
- Crossfade:** Apply Fade Ins / Outs and X-Fades on AUDIO Regions
- Automation:** Select Automation Data for moving & copying. Apply Automation Curves by click dragging between break points. Toggle Tool function from dropdown box.
- Marquee:** Select portions of a region for editing with other tools.
- Q (Matrix Edit):** Quantize Tool.
- Finger (Matrix Edit):** Alter Note Lengths